

BIKE AND WINE

From the passes of the Dolomites
to the hills of the Val di Cembra



WELCOME TO ALBERGO PANORAMA

Discover Trentino Alto Adige by cycling on cycle paths and roads with little traffic.

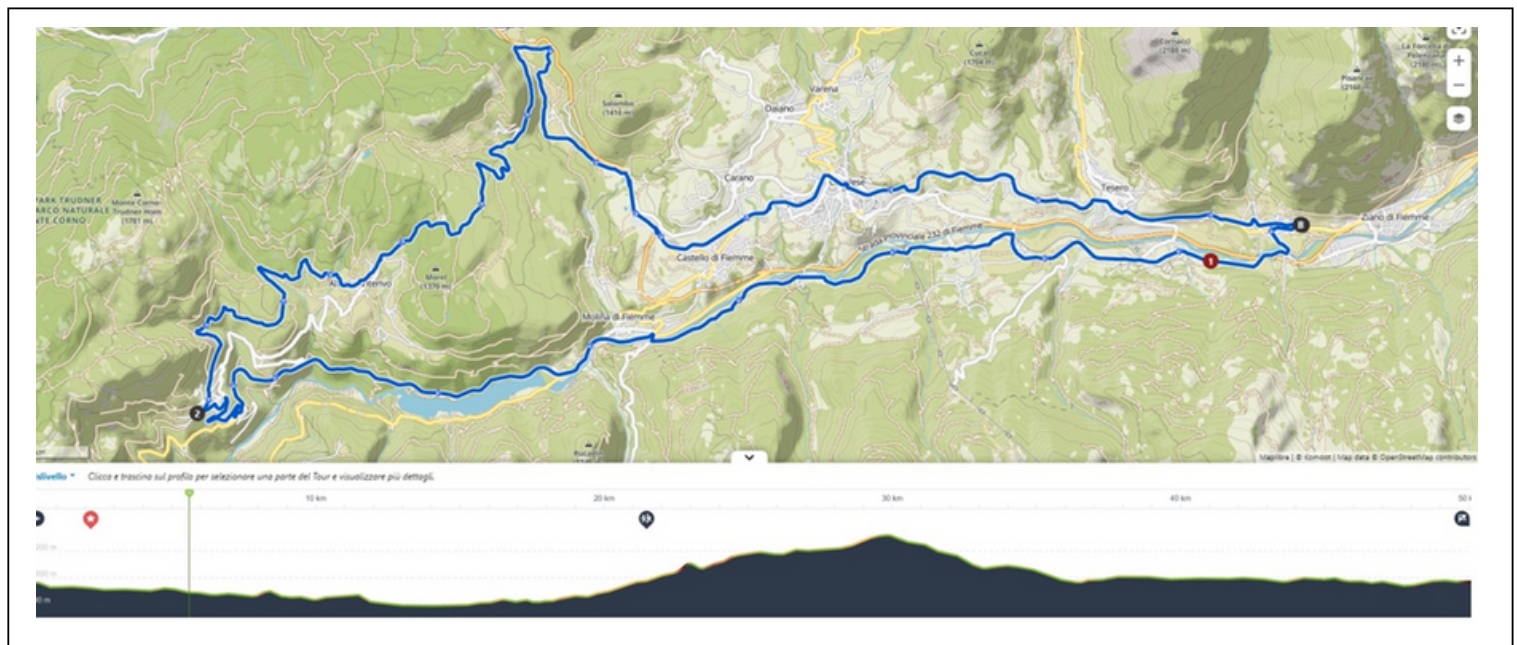
Arrival at the hotel, check-in of rooms and bikes and presentation of the week's programme by the owner Diego, a keen cyclist who will be happy to accompany you on your excursions.

DISCOVERING VALLE DI Fiemme

50 km / 500 m of altitude difference

After breakfast we depart for the Cembra Valley, after a pleasant climb through the woods and on roads with little traffic we reach the picturesque village of Anterivo in the province of Bolzano.

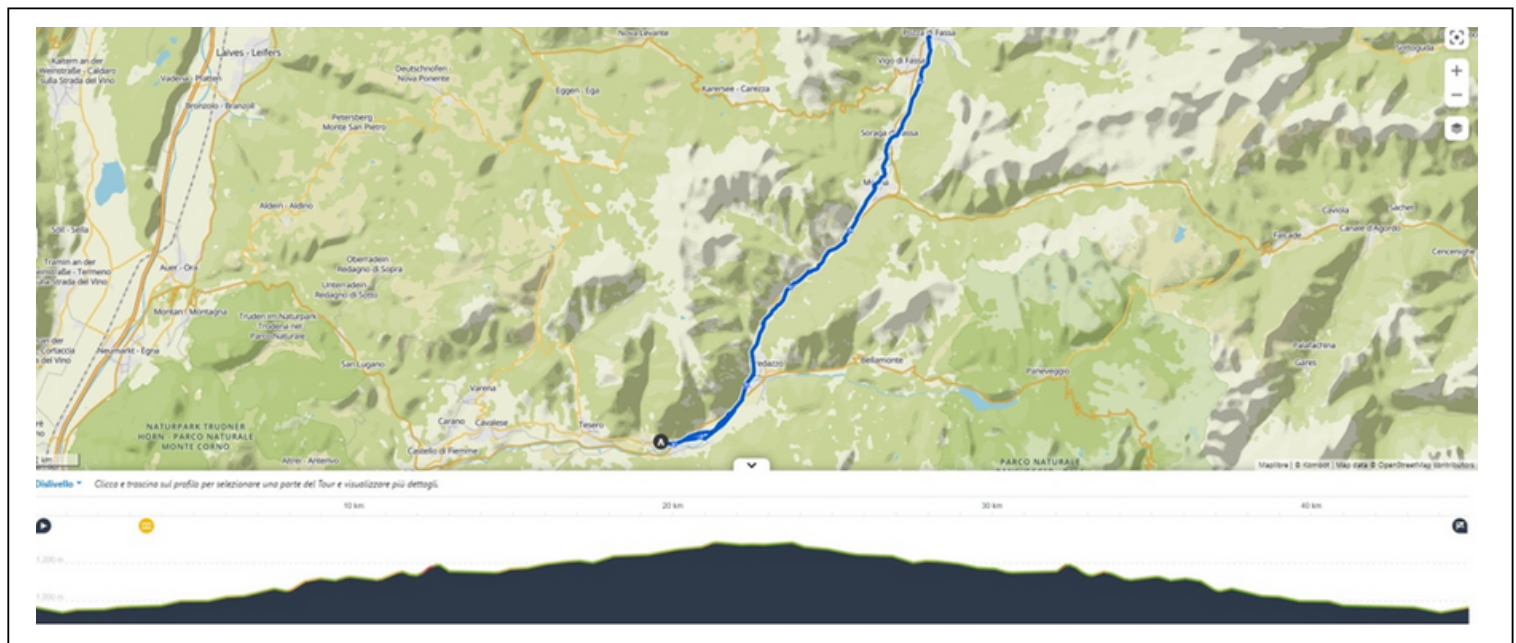
From here you descend towards Cavalese. Stop at the social dairy to taste bacon and local cheeses.



VALLE DI FASSA CYCLE PATH

70 km/600 m of altitude difference

Passing through the villages of Predazzo, Moena and Pozza di Fassa. You can reach Canazei pedalling along the cycle path that follows the course of the Avisio river, in complete safety and tranquillity.



LAKE CALDARO, BOLZANO AND ADIGE CYCLING PATH

60 or 90 km/ 500/600 m of altitude difference

This tour includes a transfer to Ora, which is 30 km from the hotel. You cycle along the shores of Lake Kaltern and enter the vineyards of the Spring Valley.

Along a disused railway line, which has now become a cycle path, you will reach the centre of Bolzano and take a short tour of the city. Afterwards you return to the starting point on the cycle path along the Adige River. Return to the hotel by transfer.

If you wish, you can do the first part of the tour by bike instead of the transfer. In this case there is an extra 30 km.



REST DAY

You can choose between the following opportunities!



A guided e-bike tour
of 50/60 km



Spend the day in perfect
relaxation and let yourself be
pampered by the water at the
QC Terme di Pozza di Fassa*



- Experience an adrenaline-
filled adventure
rafting on the turbulent
waters of the Avisio torrent



Visit and tasting at the "L'Ones" grappa workshop



Visit to the historic city of Trento and the Buonconsiglio castle



Visit and shopping in the city of Bolzano

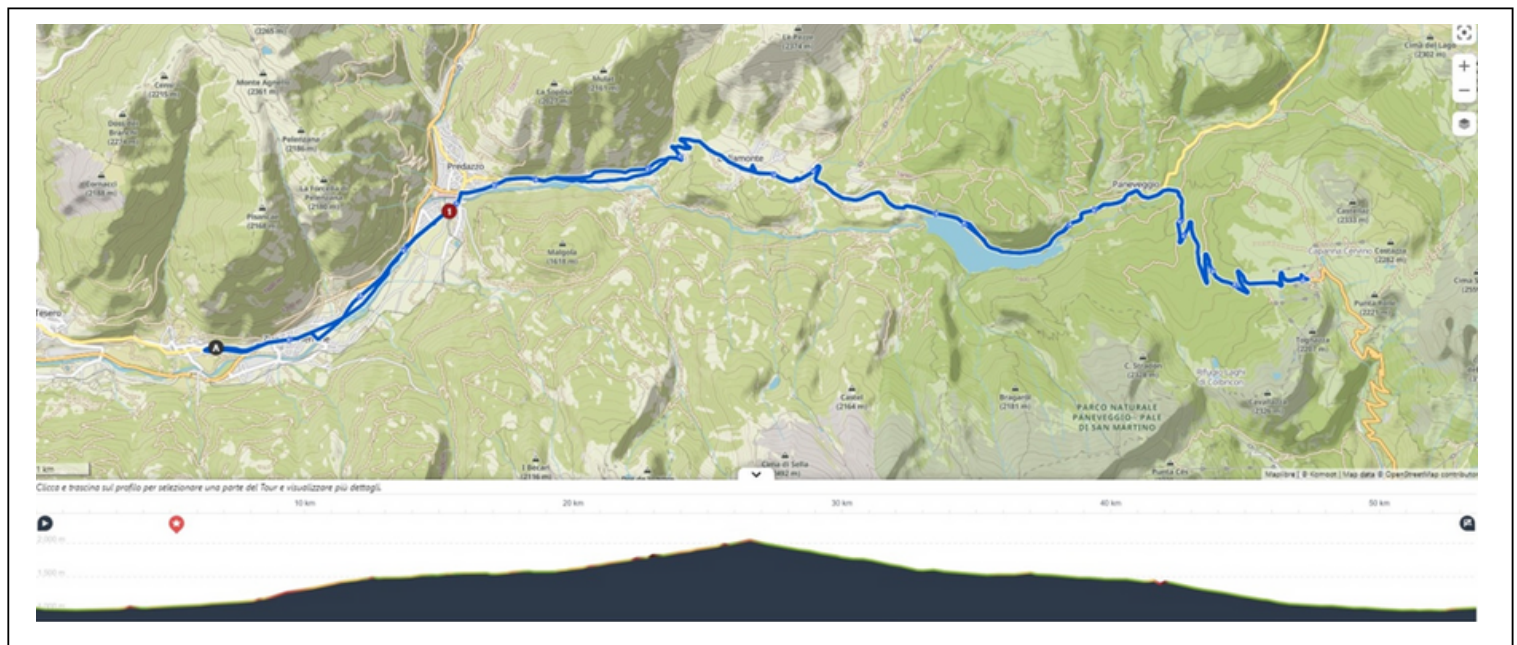


Relaxing day at the Predazzo Biolake

PASSO ROLLE AND THE GRUPPO PALE SAN MARTINO

55km/ 1000m of altitude difference

A long climb, but never particularly demanding because the gradient is always constant at 5/6% and the scenery of the Paneveggio Nature Park is simply magnificent. No less magnificent is the view of the Pale di San Martino, which can be enjoyed on leaving the woods.



VALLE DI CEMBRA AND THE EARTH PYRAMIDS OF SEGONZANO

85 km/ 300 of difference in height

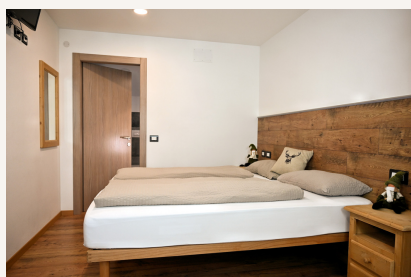
An easy route, ideal for cycling on roads with little traffic in the land of wine.

It is on these roads that Francesco Moser and Gilberto Simoni, two greats of professional cycling!

On the way there will be a stop in a brewery or a beer cellar to taste local beer or wine.



OUR HOTEL



Albergo Panorama, via Templari 51. 38030 Panchià
Val di Fiemme, Trento, Dolomiti (IT)
+390462813137 www.albergopanorama.it